

*everfit*

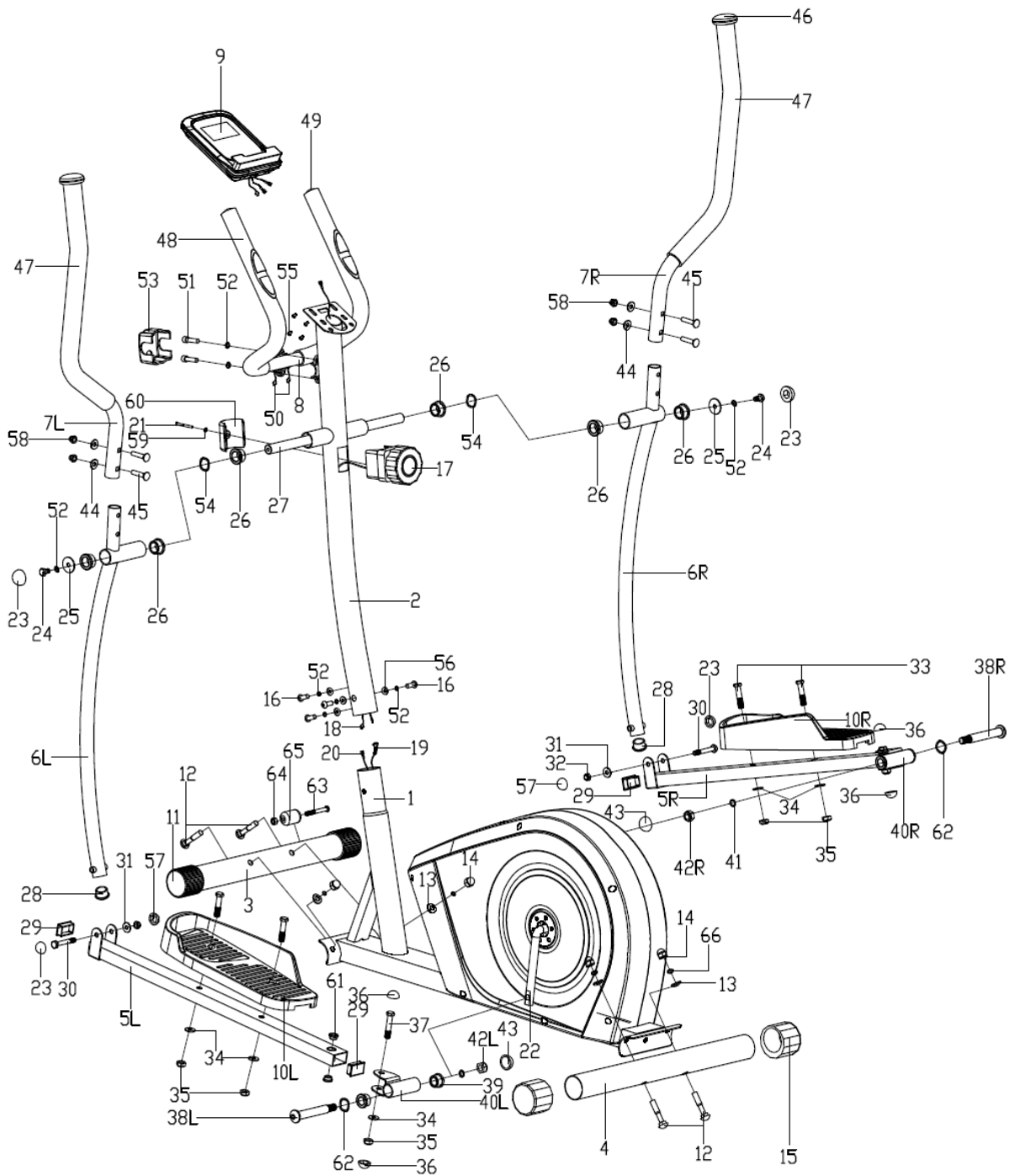
INSTRUCTION



**EFK500**



# EXPLODED DIAGRAM





# PARTS LIST

NO.	DESCRIPTION	QTY	NO.	DESCRIPTION	QTY
1	Main frame	1	51	Hex bolt M8X30	2
2	Handlebar post	1	52	Spring washer D8	8
3	Front stabilizer	1	53	Handlebar chuck cover	1
4	Rear stabilizer	1	54	Waved washer $\Phi 20 \times \Phi 28 \times 0.3$	2
5L/R	Pedal support (L/R)	1pr	55	Cross screw	4
6L/R	Swing bar(L/R)	1pr	56	Arc washer $\Phi 20 \times d8.5 \times R25$	4
7L/R	Handlebar (L/R)	1pr	57	Nut cap S13	2
8	Armrest	1	58	Acorn nut M8	4
9	Computer	1	59	Flat washer D5	1
10L/R	Pedal (L/R)	1pr	60	Tension controller cover	1
11	Front end cap	2	61	Metal bushing $\Phi 14 \times 10 \times \Phi 10.1$	4
12	Carriage bolt M10X63	4	62	Waveform washer D17X0.3	2
13	Arc washer $\Phi 10 \times 1.5 \times \Phi 25 \times R28$	4	63	Outer hexagon bolt M6XL45	2
14	Acorn nut M10	4	64	Nylon nut M6	2
15	Rear end cap	2	65	Transport wheel	2
16	Allen screw M8X15	4	66	Spring washer D10	4
17	Tension controller	1	67	Nut	1
18	Extension wire	1	68	Lock washer	1
19	Tension cable	1	69	Inside Bearing Collar	1
20	Sensor wire	1	70	Ball Bearing	2
21	Cross screw M5X45	1	71	Bearing Collar	2
22	Crank	1	72	Hex bolt M5 x 50	1
23	Nut cap S14	4	73	Hex nut M5	2
24	Hex bolt M8X15	2	74	Wave washer D12	1
25	Flat washer $\Phi 8.2 \times \Phi 32 \times 2$	2	75	Screw ST2.9 x 12	2
26	Axle bushing $\Phi 32 \times 2.5$	6	76	Outside Bearing Collar	1
27	Long axle	1	77	Big washer	1
28	Round end cap $\Phi 28 \times 1.5$	2	78L/R	Chain cover	1pr
29	Square end cap $40 \times 25 \times 1.5$	4	79	Belt pulley	1
30	Hex bolt M8X55	2	80	Belt	1
31	Flat washer d8 X1.5	2	81	Screw ST4.2 x18	12
32	Nylon nut M8	2	82	Hex bolt M6 x 15	2
33	Hex bolt M10X45	4	83	Spring washer D6	2
34	Flat washer d10X1.5	6	84	Spring washer D6	2
35	Nylon nut M10	6	85	Circlip	2
36	Nut cap S16	4	86	Magnet board	1
37	Hex bolt M10X50	2	87	Magnet	8
38L/R	Pedal locking bolt (L/R)	1pr	88	Spring	1
39	Axle bushing $\Phi 24 \times 20 \times \Phi 16.1$	4	89	Magnet board	1
40L/R	Connecting joint (L/R)	1pr	90	U-shape washer	2
41	Spring washer $\Phi 13 \times B2$	2	91	Flange nut M10 x 1	1
42L/R	Nylon nut (L/R)	1pr	92	Adjustable bolt	2
43	Nut cap S19	2	93	Hex conical surface nut M10x1	2
44	Arc washer $\Phi 20 \times d8 \times 2 \times R16$	4	94	Hex nut M6	2
45	Carriage bolt M8X40	4	95	Bearing 6000	2
46	Mushroom end cap	2	96	Flywheel	1

47	Handlebar foam grip	2	97	Flywheel axle	1
48	Armrest foam grip	2	98	Crank cover	2
49	Round end cap $\Phi 25 \times 1.5$	2	99	Hex thin nut M10 x 1	1
50	Pulse sensor wire	2			

**NOTE:**

Most of the listed assembly hardware has been packaged separately, but some hardware items have been preinstalled in the identified assembly parts. In these instances, simply remove and reinstall the hardware as assembly is required.

Please reference the individual assembly steps and make note of all preinstalled hardware.

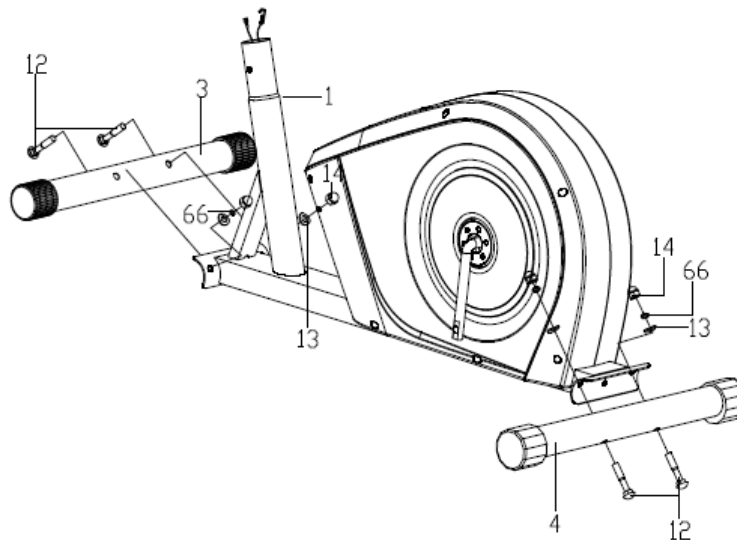
**PREPARATION:** Before assembling, make sure that you will have enough space around the item; Use the present tooling for assembling; Before assembling please check whether all needed parts are available.

It is strongly recommended this machine to be assembled by two or more people to avoid possible injury.

## ASSEMBLY INSTRUCTION

*Step 1:*

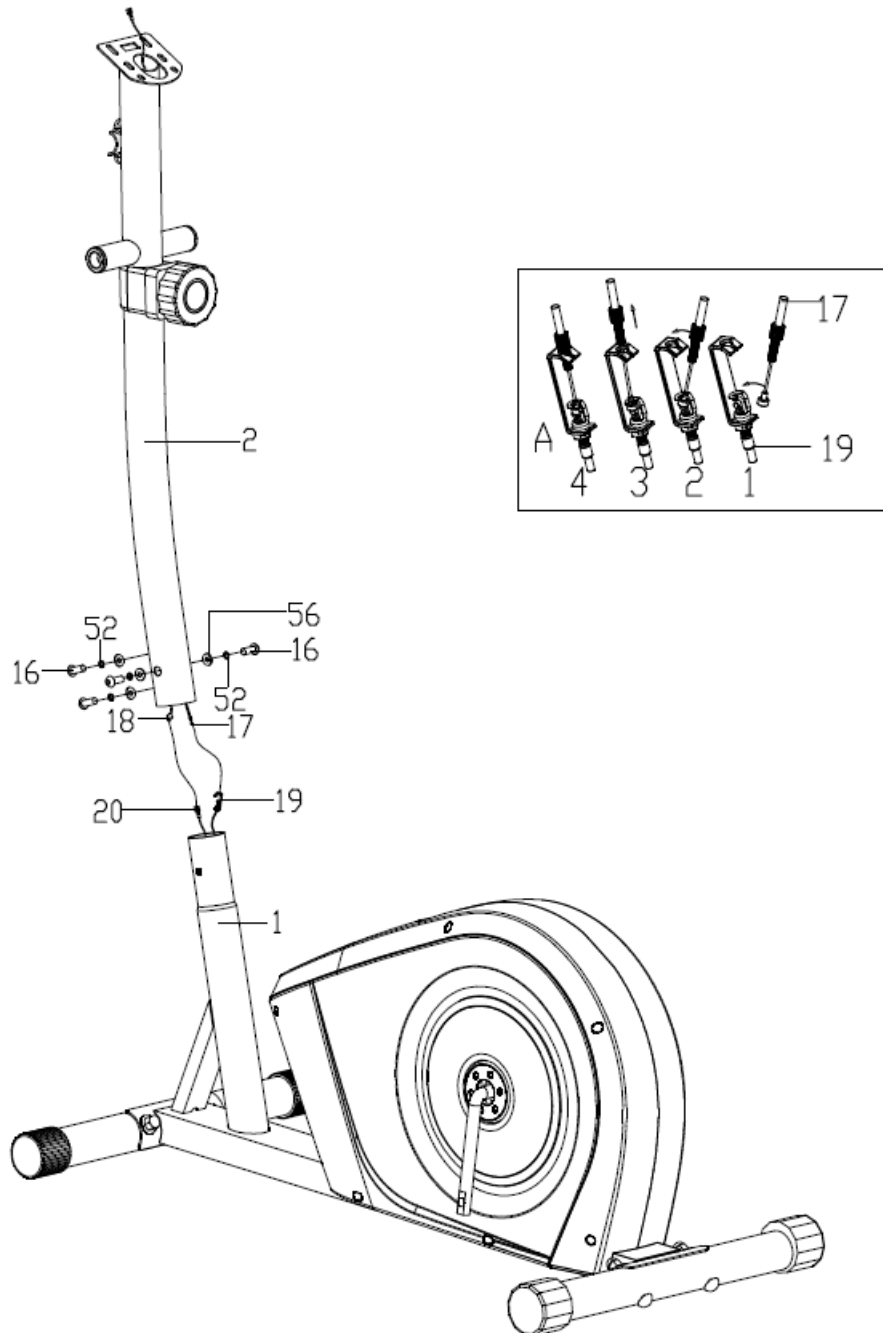
Fix the Front stabilizer (3) and Rear stabilizer (4) to the Main frame (1) with Carriage bolt (12), Spring washer (66), Arc washer (13) and Acorn nut (14)



Step 2:

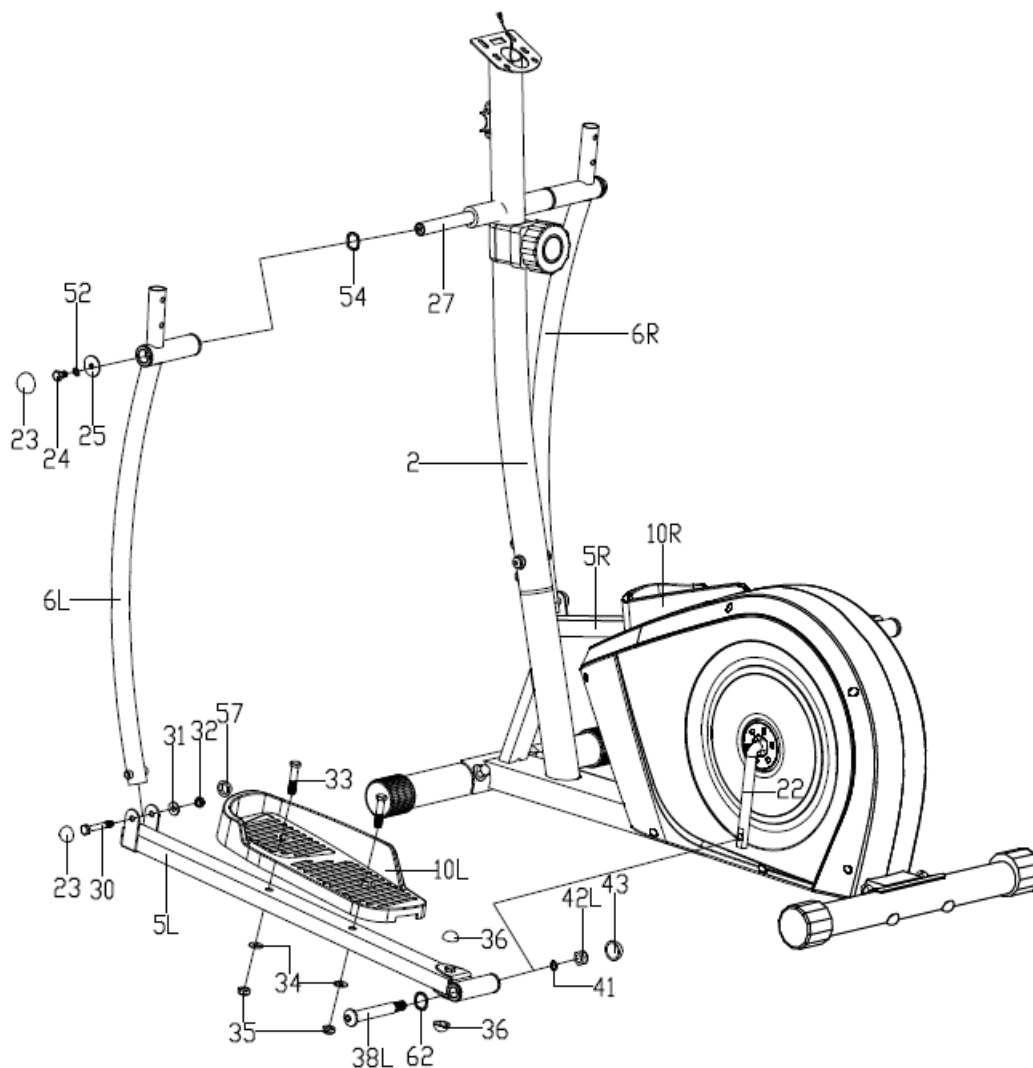
Connect the Sensor wire (20) well with Extension wire (18) and then connect the Tension cable (19) well with wire of Tension controller (17) as shown.

Fix the Handlebar post (2) to the Main frame (1) with Allen screw (16), Spring washer (52), Arc washer (56).



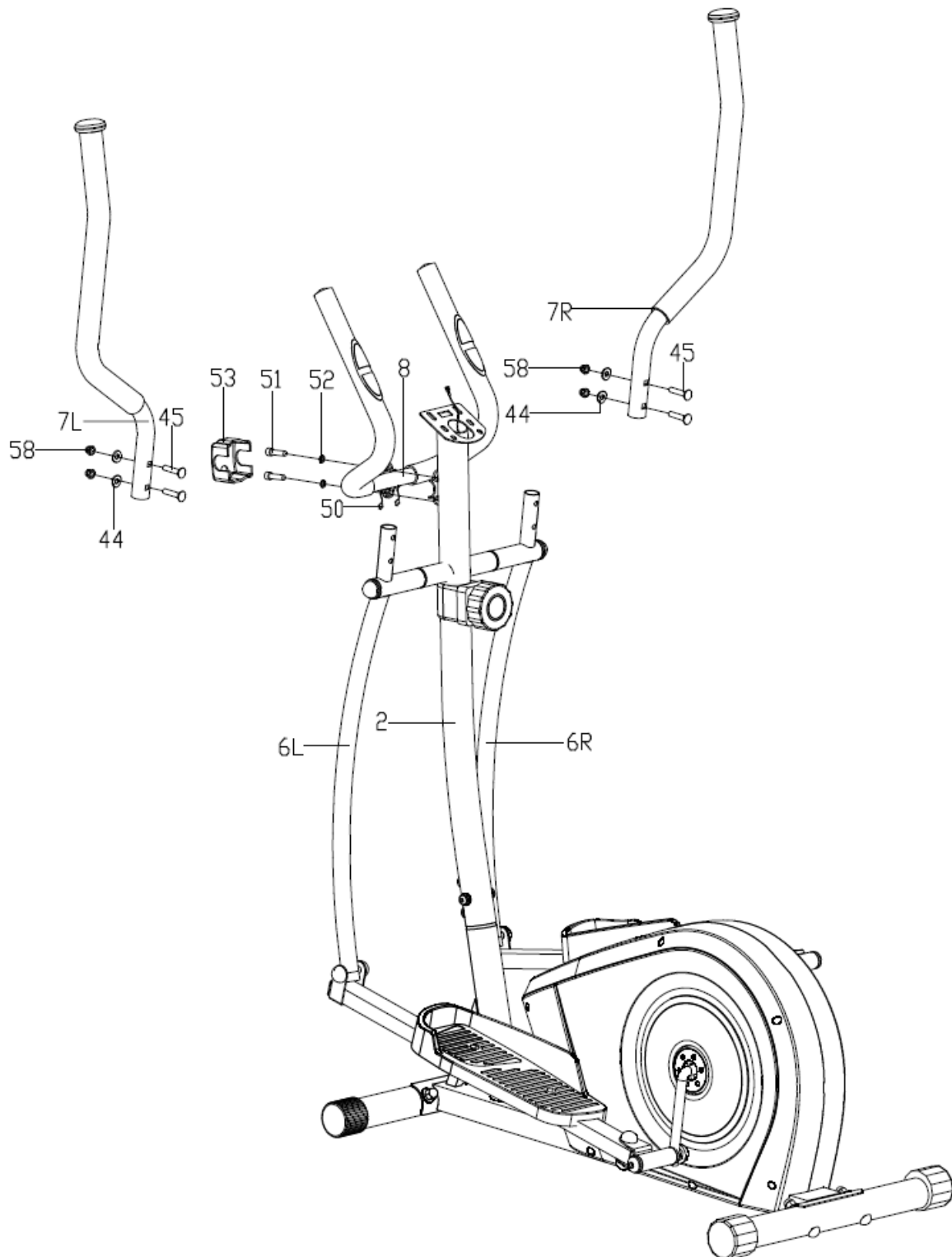
### Step 3:

- A:** Fix the Swing bar (6L) on the long axle of the Handlebar post (2) with Hex bolt (24), Spring washer (52), Flat washer (25), Waved washer (64) and Long axle (27) as shown. Please do not tighten them this time.
- B:** Attach the connecting joint together with Pedal Support (5L) to the Crank (22) using Pedal support bolt (38L), Waveform washer (62), Spring washer (41) and Nylon nut (42L) as shown. Please do not tighten them this time.
- C:** Connect Swing bar (6L) with Pedal support (5L) using Hex bolt (30), Flat washer (31) and Nylon nut (32). Tighten the Hex bolt (24) (30) and Nylon nut (42L). Finally Cover the Nut caps (23) (57) (43)(36).
- D:** Fix the Pedal support (5R) and Swing bar (6R) to Crank (22) and Handlebar post (2) in the same way.
- E:** Fix the Pedal (10L/R) to the Pedal support (5L/R) with Hex bolt (33), Flat washer (34) and Nylon nut (35).



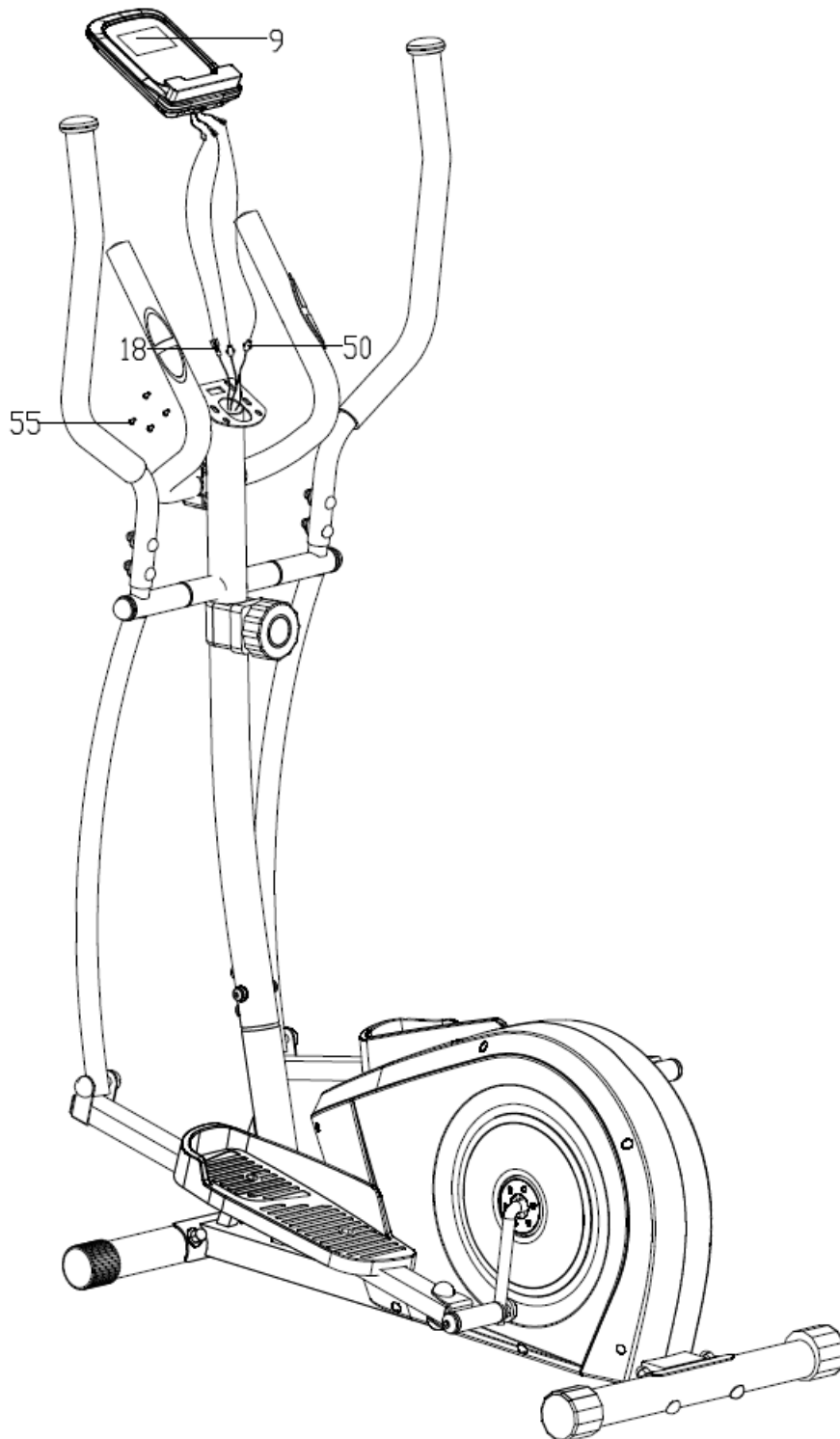
## Step 4:

- A:** Put the Pulse sensor wire (50) through the handlebar post (2) and then out of the hole of the computer bracket. Fix the armrest (8) on the handlebar post (2) with Hex screw (51), Spring washer (52) and then cover the Handlebar chuck cover (53) to the related position.
- B:** Attach the Handlebar (7L/R) to the Swing bar (6L/R) using Carriage bolt (45), Arc washer (44) and Acorn nut (58).



Step 5:

Connect the Pulse sensor wire (50) and Extension wire(18) with the wires coming from the Computer (9), and then fix the Computer (9) onto the computer bracket of the Handlebar post (2) with Cross screw (55).





GARLANDO SPA

Via Regione Piemonte, 32 - Zona Industriale D1

15068 - Pozzolo Formigaro (AL) - Italy

[www.everfit.it](http://www.everfit.it) - [info@everfit.it](mailto:info@everfit.it)